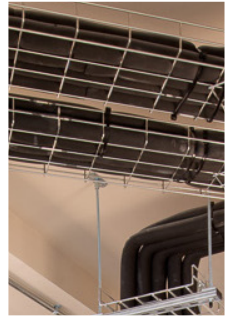


RUNWAY



Bath

EAST

Kings Court
Parsonage Lane
Bath BA1 1ER

runwayea.st

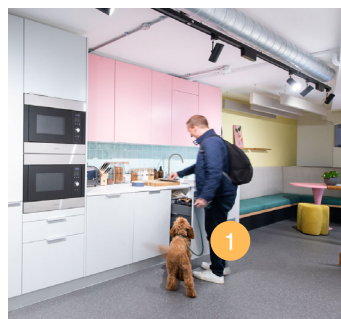
HI THERE.

Fighting boring offices since 2014.

We're relentless when it comes to making our teams happy. Can't stop, won't stop. That's why over 5,000 ambitious members across the country love us.

Customised private offices, flexible coworking spaces and everything in between — all sorted for you with zero faff.

Limber up at Run Club. Delight in dogs on demand. Go nuts on Cake Wednesday. Don't organise any of it. Bliss.







WHAT WE DO



Team Bliss

We create countless moments to make your team happy all day, every day. Enjoy an unrivalled collection of team perks and events to boost your careers page — all sorted by our on-site dream team.



Space to Scale

Bask in beautiful, customisable office space, where stuff gets fixed by people who care. All under membership plans as flexible as I'm a Celebrity's definition of celebrity. Plus no hidden fees down under. For teams of all sizes from 1-100.

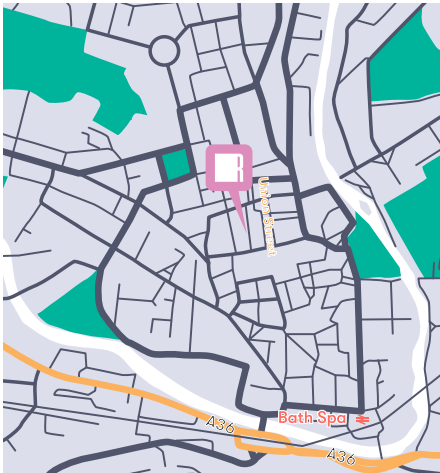


Big Desk Energy

Join other startups, agencies and growing companies in a forward-thinking community that cares about its impact. Be part of something bigger, supported by a growing team (...us) that feels the same. We're big advocates for green energy and greener rewards (like the living wage).



WHERE WE ARE



Transport:

Bath Spa Station: 7 min walk away

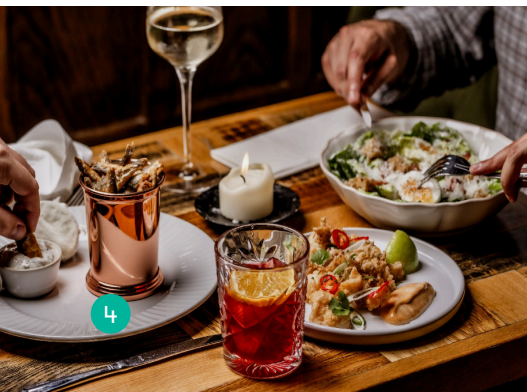
Oldfield Park Station: 20 min walk away

Lunch:

The Huntsman - A historic Georgian pub: 7 min walk

Historic:

The Roman Baths: 2 min walk



WHAT'S HERE

When you step through the door, you'll have a cold drink in one hand and a puppy in the other.



Easy transport

Just 7 mins from Bath Spa Station



Free meeting rooms

A bunch of rooms and phone booths for meetings (or karaoke).



Funky office add-ons

Neon sign? Ball pit? In-office espresso? Drinks fridge? You name it.



Fully serviced

All cleaning, printing and faffing included. Bliss.



On-site dream team

Local experts, champion hype team and always here for you.



Honesty cafe

Grab a decent coffee or a cold beer. Go wild. It's for charity.



Drinks trolley

Our famous Friday drinks brought to your desk. Cold. Free. Desk.



Cake Wednesdays

It's halfway through the week. Here's a tonne of cake.



Space to unwind

Acres of comfy space to relax, work, breakdance. Take your pick.



Bike storage

Have a bike? You'll love being able to put it somewhere.



Super speedy WiFi

Not a shocker, but here it is anyway. Dedicated lines available.



Fully furnished

You bring the people, we'll bring comfy chairs and desks. It's a date.



On-site showers

Ideal for commuters (and people that like showering).

MEMBERSHIPS



Private Office

A lockable, private office

- 👥 Suitable for teams of 3-100
- 👤 Fully serviced
- 🖨️ Fully furnished with desks and chairs
- 🌐 All membership perks included
- 📅 Flexible agreements
- ⚙️ Customisation available



Private Office Plus

Enhanced customisation options

- 👥 Suitable for larger teams
- 👤 Fully serviced
- 🖨️ Fully furnished with desks and chairs
- 🌐 All membership perks included
- 📅 Flexible agreements
- ⚙️ Advanced customisation options

All our members get:

- Access to meeting rooms and phone booths
- A faff-free environment (think utilities, printing, cake)
- Membership plans as flexible as I'm a Celebrity's definition of a celebrity
- No hidden fees down under



Dedicated Desk

A fixed desk in a shared office

- 👤 Individuals and small teams
- 🛎 Fully serviced
- 🪑 Fully furnished with desks and chairs
- 🎁 All membership perks included
- 🔄 Flexible agreements



HIGHLIGHTS



SO MANY DELIGHTS

Runway East Bath is packed full of delights for you and your team to enjoy on the daily. Think, a Secret Room for those 121s, a large Boardroom for those company-wide discussions and a Reading room for some focused time (or to finish that chapter at lunch!)



ALL ACCESS PASS

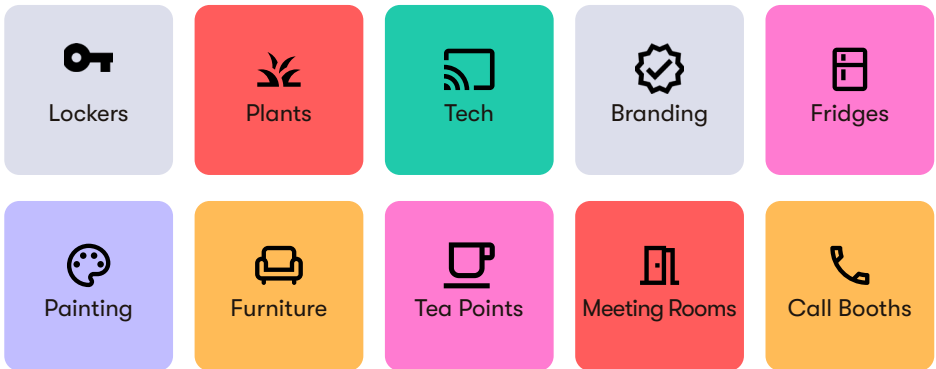
Have a meeting elsewhere in the UK? No sweat, your memberships gets you across to any of our other sites. Pop into one of our 6 London sites, 2 Bristol sites or Brighton hub.





CUSTOMISE YOUR OFFICE

From simple logos to custom murals, we've seen – and done – it all. We want your office to feel like your home.



Chat to our membership team about giving your space some razzle dazzle.

WORD ON THE STR

We've tried everyone else, and we prefer us.
So do thousands of our members.

500
startups



GRIND



 classpass

 VenueScanner

 IMMERSIVELABS

 paymentsense
beyond ordinary

THEHUTGROUP[®]





Here's why...

“There’s just something about the place that just feels right.”

Duncan Cheatle
CEO & Co-Founder
Learn AMP



“We couldn’t recommend Runway East more.”

Michael Langguth
Co-Founder and COO
POQ



“We couldn’t be happier with our choice.”

Marcus Exall
Director
Monese



“Runway massively amplifies your company culture.”

Tom Woollard
CEO & Co-Founder
Bunk



“It’s completely revolutionised our business. It’s given us the room to grow. It’s all been such an incredible experience.”

Tom
Director
Lumenate



“It generally makes coming into work that little bit more fun.”

SR2



“The staff are incredibly supportive, they’re so friendly.”

PerformanceIN



“Really pleased that we moved here. Highly recommended.”

Kate Boulton
General Manager
Unbound



“The most social place I’ve ever worked.”

Paul Wiseall
Co-Founder
Death.io



“Runway East is our spiritual (and actual) home.”

Joe Cripps
Managing Director
Trail



“Runway East is the best place to scale a business.”

Gareth Williams
Founder
YellowDog



FAQS

The Building

Can Runway East accommodate technical requests like on-site servers?

Yes, Runway East can accommodate a wide variety of technical requests including secure on-site servers, though there may be additional fees.

How many other people will be in the building?

There's space for over 530 members.

Do you host events?

Yes, we host a bunch of events, all sorted by our on-site dream team. And when we say events, we don't mean awkward networking sipping on warm drinks. We mean tense team quizzes, mouth-watering cooking demonstrations, sing-your-heart-out karaoke and so much more.

Am I allowed as many people as I want in my office?

Each office comes with a capacity restriction, sadly. But you're welcome to have as many guests in as you like.

Your Membership

How flexible is flexible?

Standard pricing for private offices is based on a 12-month term. We offer lots of flexible options on longer terms, too.

Are there any hidden fees we should be aware of?

All options come fully furnished with desks and chairs and fully serviced; all broadband, utilities, printing, tea, (decent) coffee, water etc are included in your price. The only additional fees would be if you requested that we customised your office with breakout furniture, branding etc, or if you went over the very generous meeting room coins.

What are the membership criteria?

Any business can join, but we do make sure that they're aligned with the casual and relaxed atmosphere of our sites. Very formal, quiet businesses may not find us best suited to their needs!

The Area

How easy will it be for my team to get to work?

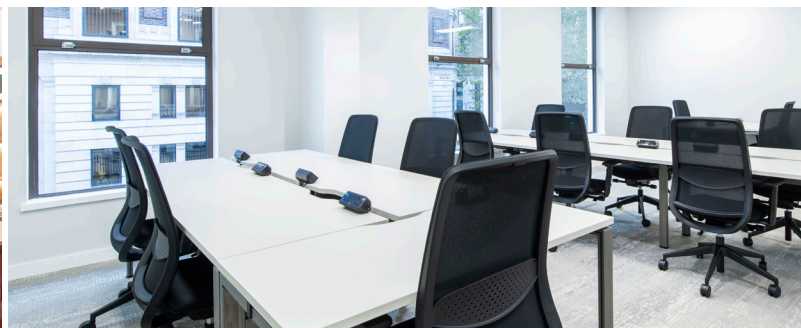
We're a 7 minute walk from Bath Spa station and 20 minutes from Oldfield Park Station.

And how about places nearby for team outings?

If you're treating the team to a bite to eat, then we love Coeur de Lion, but you also can't go wrong with The Huntsman, Saracen's Head or The Canary Gin Bar if you're *really* celebrating!

Any recommendations for client meetings?

We have 12 meeting rooms of all sizes that could help. Want fancy catering to impress? We'll bring it to your room. But if it's off-site you're after, Nook for coffee or Colonna and Small's if you're really trying to impress.



SOLD?

WE'RE

Kings Court
Parsonage Lane
Bath
BA1 1ER



HERE

✉ membership@runwayea.st

🌐 020 3137 9953

📷 runway_east

🌐 runway-east

**RUNWAY
EAST**

runwayea.st

Scan for more info!

